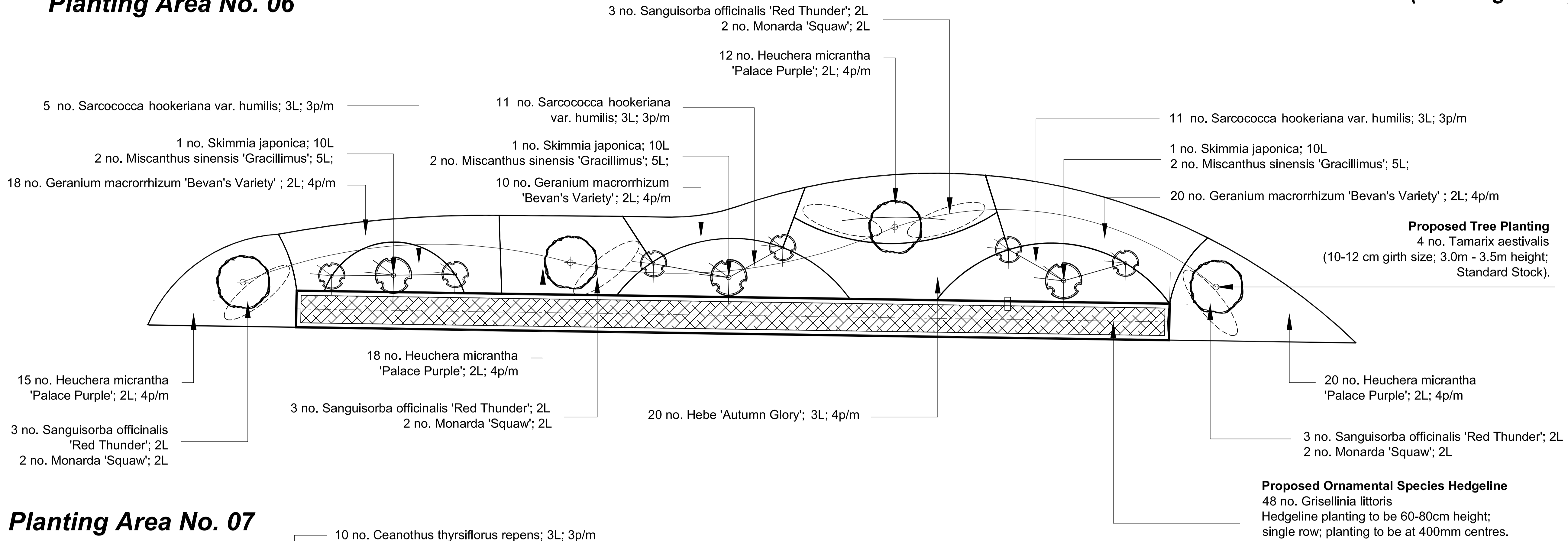
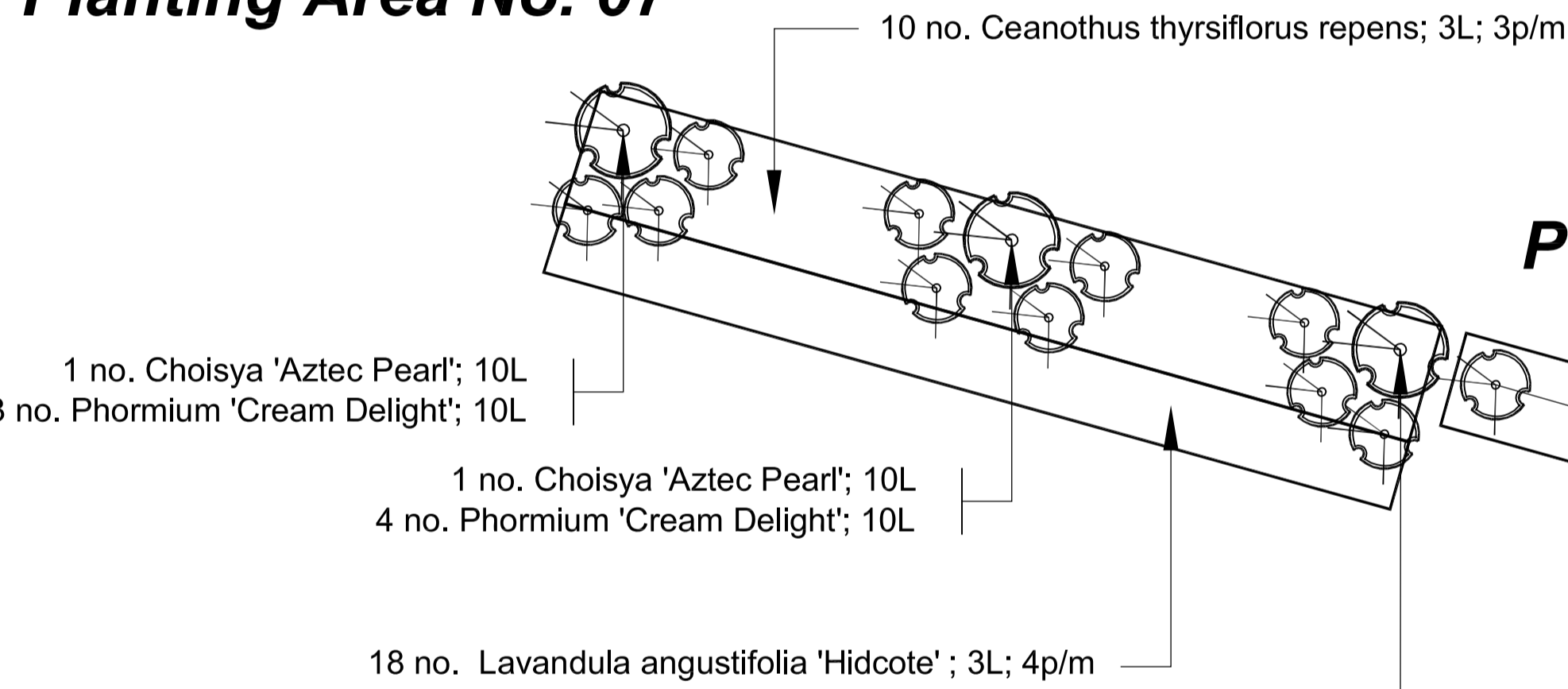


Planting Area No. 06

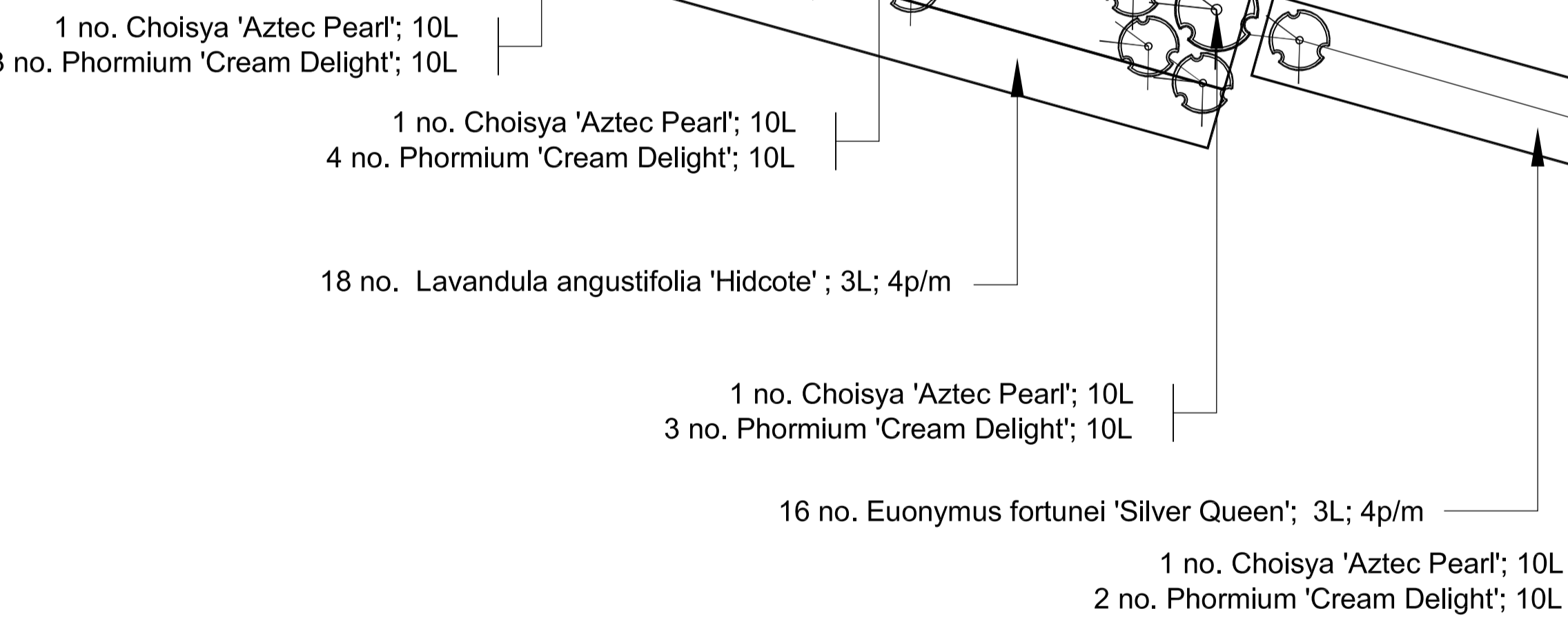
(Drawing 3 of 4)



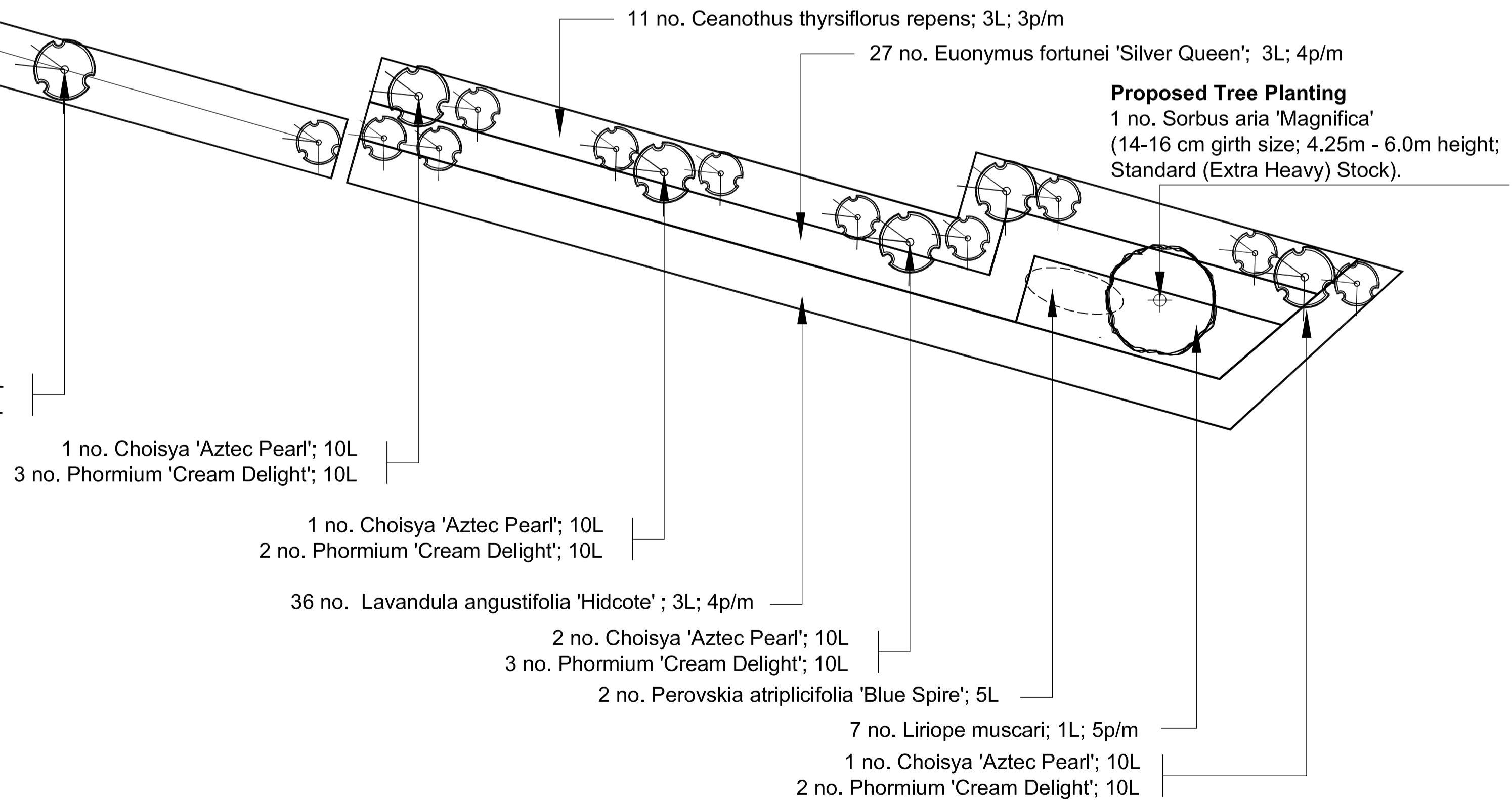
Planting Area No. 07



Planting Area No. 08



Planting Area No. 09



Legend

- Proposed Native Specimen Tree Planting (14 - 16 cm girth size; Standard Extra Heavy; 4.25 - 6.0m height)
- Proposed Ornamental Specimen Tree Planting (14 - 16 cm girth size; Standard Extra Heavy; 4.25 - 6.0m height)
- Proposed Ornamental Specimen Tree Planting (10-12 cm girth size; 3.0m - 3.5m height; Standard Stock)
- Specimen and Accent Planting
- Shrub / Groundcover Planting Areas
Planting Areas to be a minimum of 300mm depth of subsoil overlain with a minimum of 450mm depth of Multi-Purpose Topsoil to BS:3882:2015. Topsoil to be tested and certified by a Soil Scientist in accordance with the imported topsoil specification.
- Herbaceous / Bulb Planting
Herbaceous and Bulb Planting Areas
- Proposed Mixed Native Species Hedgeline
Proposed Mixed Native Species Hedgeline planting. Hedgeline planting to be 60-80cm height; 2 no. staggered rows set 400mm apart; planting to be at 400mm centres.
- Proposed Ornamental Species Hedgeline
Proposed Ornamental Species Hedgeline planting. Hedgeline planting to be 60-80cm height; single row; planting to be at 400mm centres.

Planting Areas / Mulching
All proposed shrub planting areas to be overlain with 75mm depth Ornamental Bark Mulch. Planting areas to be mulched with five graded ornamental bark mulch; 5 - 35mm nominal particle size; BS4970:1987.

Tree Pit Tree Planting
Tree Pits

- Sizes:
 - (10-12 cm girth size; 3.0m - 3.5m height; Standard Stock); and
 - 14 - 16cm Girth; 4.25 - 6.0m height (Standard Extra Heavy);
- Tree Pit Size: 1000mm diameter x 750mm depth.
- Backfilling Material
 - Composition: Previously prepared mixture of topsoil excavated from pit and additional topsoil as required, together with:
 - Annelorand / Conditioner: 20% by volume, together with 20% volume Tree Planting Compost (8mm peat free organic compost) supplied by Bourne Armerity, Newenden, Cranbrook, Kent, TN18 5QG. Tel: 01797 252266. Fax: 01797 253115. Email: enquiries@bourne.co.uk, or equal and approved, and 2500 grams of Seamure Soil Builder per tree planting pit.
 - To be supplied by Agrisure Products, Stone Hill, Egerton, Ashford, Kent, TN27 9DU. Tel: 01233 756241. Fax: 01233 756419 or equal and approved.

All staked trees:

- Ties: Adjustable ties.
- Tying: Secure trees firmly but not rigidly with a single tie centrally on brace for long double staking.
- Advanced Nursery Stock (Standard Extra Heavy): Trees to be long double staked; 2 no. 2400 x 75mm diameter timber stakes driven vertically into the ground to finish 300mm below base of pit; 2 no. per tree.
- Stakes to be cut level at 1000mm height and braced with timber crossbar.

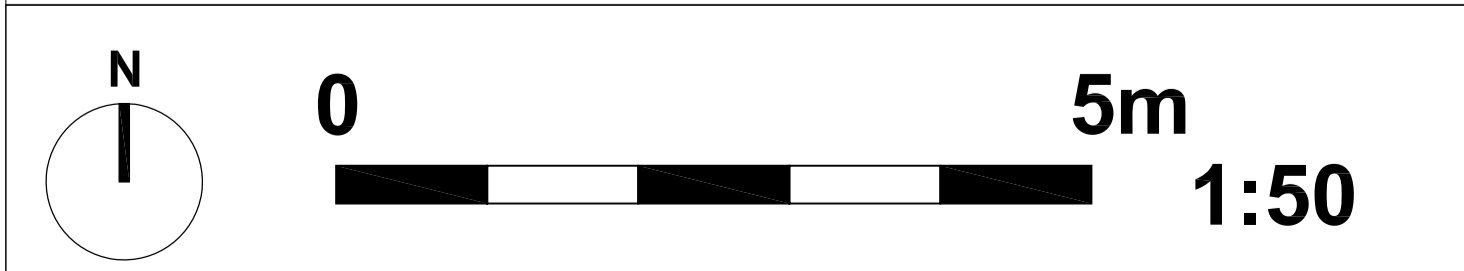
Detailed Planting Plans / Specification
(Refer to Drawings LLD954 Soft Landscape Layout and LLD954 Detailed Planting Schedule and Specification).

Rev	Description	Date	Initials
00	Planning Issue	07.07.16	KM

Lizard Landscape Design

Lizard Landscape Design and Ecology
34 South Street
Tarring
Worthing
West Sussex
BN14 7LH
Tel: 01903 216033
Email: lizard.landscape@btconnect.com

Project title	
Meridian Primary School Peacehaven, East Sussex	
Drawing title	
Detailed Planting Plan (Drawing 3 of 4)	
Scale	Drawn Date
1:50@A1	KM 30.06.16
Approved	
Drawing No	Revision
LLD954 / 04 - 03	00
CAD Filename	
LLD954/ CAD Drawings	



Detailed Planting Plan Meridian Community Primary School, Peacehaven